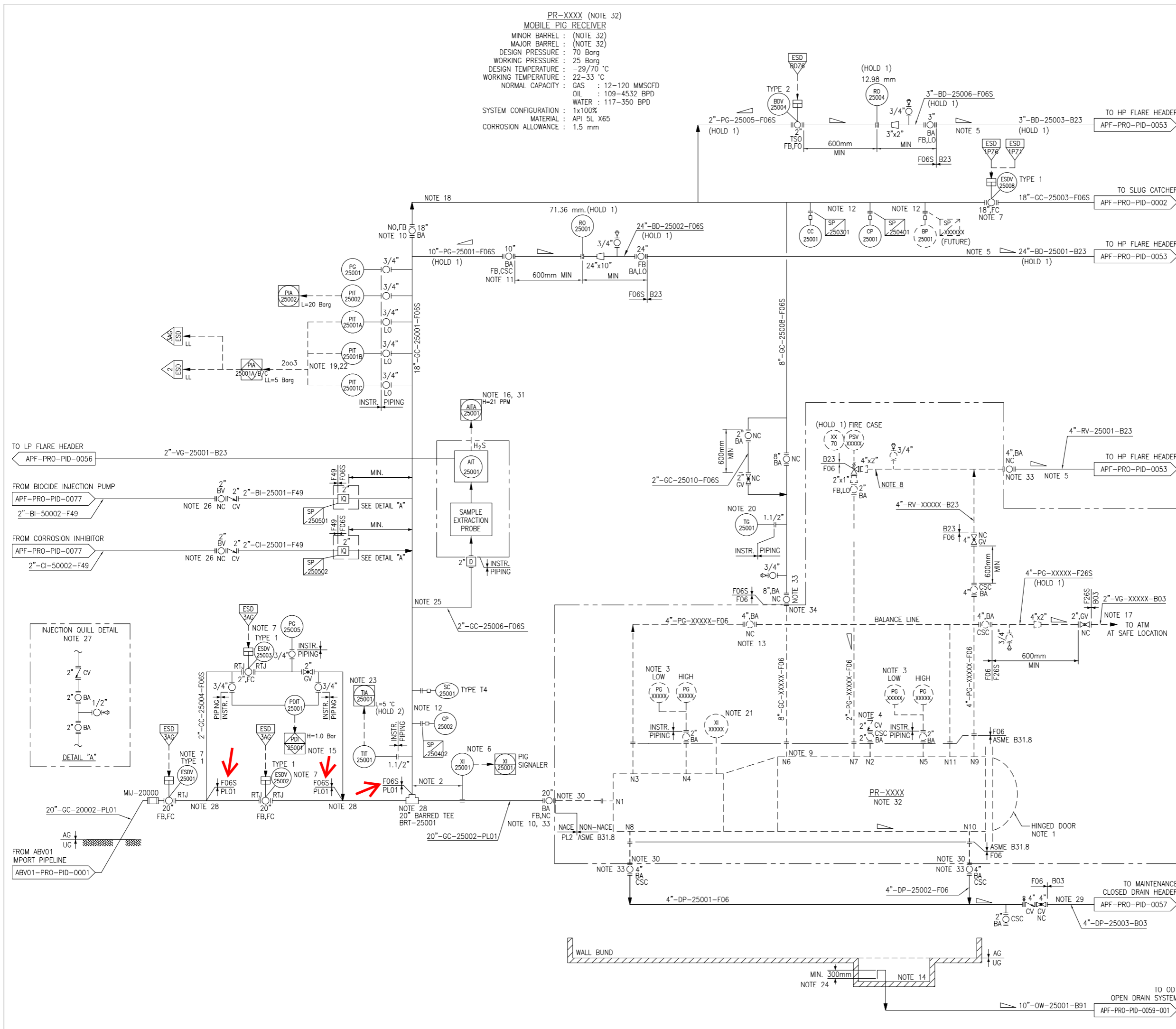


PR-XXXX (NOTE 32)  
**MOBILE PIG RECEIVER**  
 MINOR BARREL : (NOTE 32)  
 MAJOR BARREL : (NOTE 32)  
 DESIGN PRESSURE : 70 Barg  
 WORKING PRESSURE : 25 Barg  
 DESIGN TEMPERATURE : -29/70 °C  
 WORKING TEMPERATURE : 22-33 °C  
 NORMAL CAPACITY : GAS : 12-120 MMSCFD  
 OIL : 109-4532 BPD  
 WATER : 117-350 BPD  
 SYSTEM CONFIGURATION : 1x100%  
 MATERIAL : API 5L X65  
 CORROSION ALLOWANCE : 1.5 mm



- NOTES:**
- PROVIDE DOOR SAFETY MECHANICAL INTERLOCK TO PREVENT PIG TRAP DOOR OPENING WHEN UNDER PRESSURE.
  - PIG SIGNALER SHALL BE LOCATED AT MINIMUM DISTANCE OF ONE INTELLIGENT PIG LENGTH FROM THE BARRED TEE.
  - RANGE OF LOW PRESSURE GAUGE SHALL BE 0-1 Bar WITH PRESSURE LIMITING DEVICE PROTECTION GAUGE FROM OVER PRESSURE.
  - NITROGEN PURGE.
  - LINE TO HAVE NO POCKETS AND FREE DRAINING.
  - NON-INTRUSIVE TYPE, E.G. MAGNETIC TYPE TO BE SUPPLIED.
  - ABOVE GROUND BATTERY LIMIT ISOLATION VALVE ESDV. THE DISTANCE OF VALVE IS TO BE MINIMUM 15 METERS FROM PROTECTING ZONE. IF IT IS NOT FEASIBLE, THE PASSIVE FIRE PROTECTION (PFP) ON VALVE INCLUDING ACTUATOR AND ACTUATING SYSTEM WITH CERTAIN EXTEND OF ASSOCIATED UPSTREAM ABOVE GROUND PIPE SECTION TO ENSURE INTEGRITY/IMPACT TO ADJACENT FIRE ZONE AND NEED SIMULTANEOUS BLOWDOWN SHALL BE PROVIDED.
  - DISTANCE BETWEEN PSV AND REDUCER IS TO BE MINIMIZED. INSTALLATION OF ELBOW BETWEEN PSV AND REDUCER IS FORBIDDEN.
  - TOP OF PIG RECEIVER CONNECTION.
  - MANUAL VALVE TO BE EQUIPPED WITH GEARBOX/COUPLING FOR OPERATION USING PNEUMATIC WRENCH.
  - MANUAL VALVE PROVIDED FOR PLANNED PIPELINE BLOWDOWN MAX. FLOWRATE BASED ON HP FLARE DESIGN CAPACITY.
  - CORROSION COUPON AND ELECTRICAL RESISTANCE PROBE TO BE INTRUSIVE TYPE, MOUNTED AT 12 O'CLOCK, WITH THE LONG PROVE LENGTH TILL THE BOTTOM OF PIPE (DUE TO SPACE LIMITATION) WITH THE LONG PROVE LENGTH TILL THE BOTTOM OF PIPE (DUE TO SPACE LIMITATION) SUITABLE FOR PRESSURIZED ONLINE HYDRAULIC RETRIEVAL TOOL.
  - THIS VALVE TO BE OPEN TO EQUALIZE MINOR AND MAJOR BARREL SECTION BEFORE MANUAL DEPRESSURIZE PIG SYSTEM TO FLARE SYSTEM TO MINIMIZE PIG MOVEMENT DUE TO HIGH DIFFERENT PRESSURE ACROSS THE PIG.
  - BUND WITH GRATING COVER.
  - NON-AUDIBLE ALARM, INTERLOCKING LOGIC TO BE PROVIDED NOT TO OPEN ESDV-25002 WHEN PDIT-25001 IS HIGHER THAN 1 Bar.
  - THE ONLINE H2S ANALYZER IS PROVIDED TO MONITOR THE PRESENCE OF H2S FROM OFFSHORE PIPELINE THAT MAY EXCEED THE ALLOWABLE LIMIT OF NON-NACE COMPLIANCE PIPING AND EQUIPMENT. HIGH ALARM SETPOINT IS SET AT 10% BEFORE REACHING THE MAXIMUM H2S LIMIT AT SLUG CATCHER GAS OUTLET STREAM. AT THIS POINT, OPERATOR SHALL PERFORM THE CHEMICAL INJECTION ACCORDINGLY.
  - TO VENT RESIDUAL PRESSURE AND PURGE GAS TO ATM AT SAFE LOCATION AFTER DEPRESSURIZE TO FLARE SYSTEM.
  - THIS LINE IS SUBJECT TO THE SLUG FLOW. THE PIPING AND SUPPORT SHOULD BE DESIGNED FOR SLUG FLOW ACCORDINGLY.
  - PT-25001 A/B/C 2 OUT OF 3 SHALL BE PROVIDED.
  - TG-25001 MUST BE READABLE FROM PRESSURIZATION LOCATION.
  - INTRUSIVE TYPE PIG SIGNALER.
  - TOTAL APF SHUTDOWN SHALL ALSO SHUTDOWN UPSTREAM WHP SYSTEM TO PREVENT PRESSURE BUILT-UP / REACH PAHH SET POINT.
  - VISIBLE FROM PRESSURIZATION GLOBE VALVE, ACTIVITY TO BE STOP IN CASE TEMPERATURE FALL BELOW 0 °C. (PIPELINE DESIGN PRESS = 10 °C).
  - 300 mm U-SEAL IS PROVIDED.
  - ANALYZER SHALL BE MOUNTED AT 12 O'CLOCK TOP TAPPING.
  - CHEMICAL INJECTION WILL BE INTERMITTENT SERVICE.
  - THE INJECTION QUILL WILL BE EQUIPPED WITH ISOLATION MECHANISM WHICH SHALL BE ISOLATED AND REPLACED THE INJECTION QUILL WITHOUT PLANT SHUTDOWN.
  - CONNECTION AT TOP OF PIPE.
  - VALVE SHALL NOT BE INSTALLED AT DOWNSTREAM OF THIS HP/LP PRESSURE BREAK CLASS.
  - BLIND FLANGE TO BE PROVIDED BY EPC CONTRACTOR.
  - DURING PIGGING, THE OPERATING PRESSURE MAY HIGHER THAN NORMAL OPERATING. H2S HH ALARM AT 21 PPM TO BE SET TO PROTECT SSC AT HIGH OPERATING CONDITION DURING PIGGING
  - MOBILE PIG RECEIVER PROVIDED BY OTHER. THE DETAILS WILL BE REVIEWED BY THE SUPPLIER.
  - VALVE SHALL BE LOCATED UNDER BUND AREA.

- HOLDS:**
- PRELIMINARY, SIZE TO BE FINALIZED .
  - PRELIMINARY, THE MINIMUM TEMPERATURE DURING SYSTEM PRESSURIZATION/EQUALIZATION TO BE FINALIZED AS PER DEPRESSURIZATION AND LOW TEMPERATURE STUDY REPORT (MM-ASK-1A-APF-PRO-RPT-0002) .



REV	DESCRIPTION	DATE	BY	CHECK	APPR.	CHECK	APPR.
A1	ISSUED FOR REVIEW	01/06/26	WYW	GMJ	XF		

**PTTEP International Limited**  
**AUNG SINKHA DEVELOPMENT PROJECT PHASE 1A**

**APF PIPING AND INSTRUMENT DIAGRAM**  
**INCOMING PIPELINE AND PIG RECEIVER**

SCALE : NONE	DRAWING NO. MM-ASK-1A-APF-PRO-PID-0001	SHEET 1/1	REV. A1
--------------	--	-----------	---------